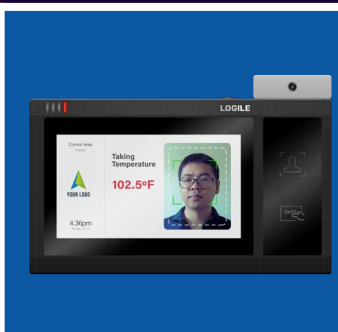
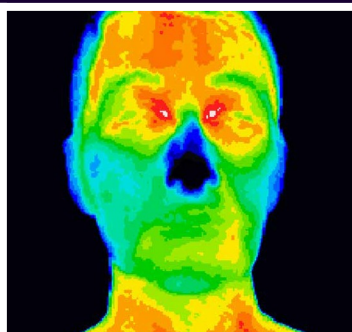


Touch-Free Health & Temperature Scanner



Designed to protect the safety of people interacting in enclosed or crowded spaces—or anywhere people congregate—Logile's Health & Temperature Scanner (HT Scanner) is an advanced solution that seamlessly integrates proven commercial-quality hardware with highly configurable enterprise software for unrivaled security and control.

The HT Scanner reads a person's temperature and collects answers to health risk screening questions conforming to your policies and local health recommendations/mandates related to COVID-19, seasonal influenza or other public health threats.

Messaging capabilities deliver important information on the spot, providing people who may represent an elevated health risk with next steps.

Alerts sent in accordance with your escalation policies enable your leaders to make responsible decisions regarding whom may enter or remain on the premises.

Places of Use

- Retail Establishments
- Manufacturing, Warehouses and Distribution Facilities
- Office Buildings
- Schools and Universities
- Hotels
- Restaurants
- Bars and Night Clubs
- Gyms and Recreational Facilities
- Sporting Events
- Spas and Salons
- Casinos, Theaters and Theme Parks
- Airports and Train Stations
- Civic and Convention Centers
- Correctional Facilities
- Places of Worship
- Healthcare Facilities

Ease of Use

- No training necessary
- Voice control
- Multiple languages
- Targeted communication (including video and real-time alerts and messaging)

Integration Options

- Any time and attendance system
- Employee or student files
- Physical access controls
- Label printer

Identification Options

- Facial recognition with or without a mask
- Mask detection
- Finger template
- Cards (barcode, mag stripe, proximity, RFID)
- Numeric
- Anonymous

Ease of Implementation and Administration

- Cloud-based subscription
- Includes hardware, software, setup, maintenance and support for the life of the subscription
- Lifetime temperature calibration (99.7% accuracy)
- Flexible configuration controlled by client
- Secure encrypted communication
- Controlled access to data

Value

- Safety, privacy, security and efficiency
- Protects your brand confidence and loyalty
- Retained business and attendance
- Limited expense — a few dollars a day per location

Discover the benefits

mike.carter@logile.com · +817-718-8308 · www.logile.com